

FOR IMMEDIATE RELEASE**CONTACT:**

J. B. Stanton Communications
 860/542-1234 Voice • 860/542-0005 Fax
Stan Pinkwas / [718] 788-7777 Voice
stanp@jbstanton.com



Salamander Designs Ships Premium Mounts, Accessories for Flat-Panel TVs

New Dyno, PilotMotion™, Flexo, Plano, Luna Ceiling and Zoom Desk Mounts Plus Synchro Accessories Deliver Stylish, Maneuverable A/V System Support



PilotMotion TableTop TV Mount with Black Glass Base

BLOOMFIELD, CT, June 16, 2008 — Salamander Designs, Ltd., a leading designer and manufacturer of modern furniture, seating and mounting products for Home Theater and A/V entertainment systems, announces the availability of more than 20 new premium high-performance TV mounting systems and accessories.

The new TV mounts shipping this month to dealers include models from all categories of Salamander Designs' broad new line. They include two new highly articulated **Dyno™ Mounts** plus a **Universal TV Mounting Adapter**, two new remote-controlled **PilotMotion™ Wall Mounts** plus a **Tabletop** model, four new **Flexo™ Mounts**, three new **Plano™ Mounts**, two new **Luna™ Ceiling Mounts**, two new **Zoom™ Desk Mounts**, and four new **Synchro™** accessories — two glass wall shelves, and two cable managers.

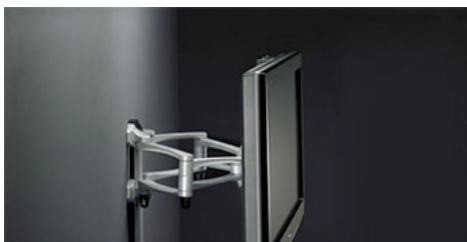
The new mounts deliver advanced, flexible solutions that make it easy to integrate display components with Salamander Designs' acclaimed modular A/V furniture systems. Or suspend components from the ceiling with Luna Series models. Or atop a desk with the Zoom Desk models. Or at eye-level on a table or sideboard with its Tabletop option. Effortlessly maneuverable, the mounts and accessories provide elegant, sturdy, reliable, space-saving support for all varieties and sizes of plasma and LCD flat-panel displays.

Designed to perfectly marry form and function, the TV mounts are as easy on the eye as they are to tilt, rotate or otherwise adjust. They combine high performance with precision engineering, dedication to detail, and innovative support solutions that reduce complexity without sacrificing quality. The TV mounts use premium materials, multiple castings, and extruded aluminum. Models in all the series are available in small, medium and large sizes, with some also available for extra-large displays.

Dynamic Designs

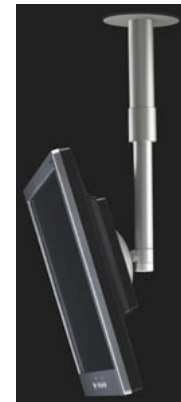
Salamander Designs' **Dyno Series** consists of three dynamic, articulating wall mounts. Multiple arms, a hinge and ball joints assure maximum flexibility, allowing screens to be simultaneously rotated, tilted and pivoted, eliminating the issue of on-screen light reflections. Weightless **ZeroForce™ Tilt** mechanisms ensure effortless maneuverability. Additional features include a clip for cable management, and extensive wings for mounting flexibility. The **Dyno 102 Small's** single-stud assembly allows it to be installed in corners.

The **Dyno 102 Medium** supports up to 100 pounds, making it ideal for 23-42 inch flat-panel screens. It swivels 30 degrees left and right, 15 degrees up and down, and integrates well with Salamander's **Synchro Wall Cover** to create a distinctive home cinema environment with all cables hidden. The **Synchro Wall Shelf** can be added for a finishing touch and to store A/V equipment.



The **PilotMotion™ Series** consists of two motorized wall mounts and one tabletop mount that respond to instructions from supplied remote controls. All feature a quiet, smooth rotator mechanism employing an innovative, patented design. Weightless **ZeroForce™ Tilt** mechanisms on the two wall mounts allow effortless maneuverability as the mounts respond to remote-control instructions to rotate the screen up to 25-30 degrees to the left or right.

The **PilotMotion 100 TableTop** also features a black glass base with



Luna Ceiling Mount



Dyno 102 Medium TV Mount with Articulating Arm

mechanisms. An advanced click system makes it safe and easy to install TVs, and a pull-cord release makes removing TVs equally easy. Additional features include an anti-theft lock, extensive wings for maximum mounting flexibility and, in some models, the ability to accommodate speakers.

The **Flexo A/V 200 XL**, for example, is a universal wall-mount system with fully integrated A/V capability. It can support most large flat-panel TVs from 42 to 65 inches, up to 175 lbs., as well as most on-wall left, right and center-channel speakers. A Lift-n-Load feature simplifies installation and angle adjustment.

The **Plano Series** consists of four low-profile wall mounts. An advanced click system makes it safe and easy to install TVs on the mounts, and a pull-cord release makes removing a TV equally simple. Additional features include an anti-theft lock, and extending wings for maximum mounting flexibility.

The **Luna Ceiling Series** consists of five dynamic, articulating flat-panel mounts ideal for any room in which a ceiling-mounted display is needed. They are capable of 360-degree screen rotation, offered in single and dual arrangements, and provide solid support with heavy-duty aluminum posts. Double arms and an extra hinge point maximize flexibility, and eliminate light reflections for optimal viewing comfort. The mounts' heights are easily adjusted, and a clip is included for easy cable management.

The **Luna Ceiling 100 Small** is a single-pole model ideal for bedrooms. It accommodates 13 to 26-inch flat-panel TVs weighing up to 40 lbs. An extra hinge-point allows screen placement in a variety of positions, a rotary assembly allows screen height to be easily adjusted, and VESA Extension Wings allow a mounting range up to 200 by 200 millimeters.

The **Luna Ceiling 200** is available in medium and large versions as both a single- and dual-screen mount. Its aluminum post features brushes along the edge for clean and simple cable management. The **Luna Ceiling Projector 200** supports up to 30 lbs. and features three and four-hole mounting.

Form + Function

The **Zoom Desk Series** consists of one single-screen and one dual-screen desk mount, each capable of 360-degree screen rotation. Double arms and an extra hinge-point offer maximum flexibility, eliminating the problem of on-screen light reflections for optimal comfort. The screens' heights are easily adjusted. Additional features include a secure desk clamp, and a clip for cable management.

Synchro Series accessories include the **Synchro 100 Wall Cover** and the **Synchro 100 Wall Shelf**. The Wall Cover is a cable manager that guides and conceals cables extending from any Salamander Designs mount. It is constructed of extruded, highly finished aluminum, and easy to install. The Wall Shelf is designed to support the peripherals that are a part of any Home Theater. Constructed of tempered glass with an aluminum assembly plate, it works with any Salamander Designs mount and the Wall Cover to create a distinctive entertainment environment.

Dealer Advantages

The new support systems offer important advantages to dealers, custom installers and consumers. The designs are simple, yet innovatively engineered with great attention to detail. Their innovative engineering, refined design and attention to detail comprise a family of refined, aesthetically pleasing products. More sculptural than structural in appearance, the mounts' smooth, curvilinear forms conceal the sharp edges characteristic of competing mounts, and enhance the visual elegance of high-performance displays.

The line-up of styles and sizes has been carefully drawn to accommodate the greatest number of TVs without presenting so many SKUs to stock as to become confusing and unwieldy. On the sales floor, they provide all-in-one solutions to dealers who also offer A/V cabinetry, such as the 600-plus that carry Salamander Designs' **Chameleon, Synergy** and **Archetype** furniture systems. Since mounting systems are necessary accessories in the sale of most flat-panel displays, they present similar advantages to dealers carrying plasma and LCD TVs. And they allow both dealers and custom installers to conduct more business with their established vendors.

Salamander Designs' TV mounting systems and accessories are available now from authorized dealers at suggested prices ranging from \$59 for a Plano 100 Small Mount to \$599 for the PilotMotion 100 TableTop Mount.

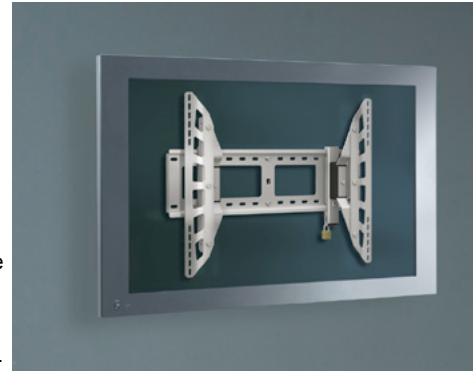
About Salamander Designs

Salamander Designs, Ltd. is a leading developer, manufacturer and marketer of modern furniture, storage, seating and mounting systems for contemporary Home Theater and A/V entertainment systems. Its versatile, advanced products bridge the gap between home furnishings and home electronics with an unstinting dedication to quality, and a broad range of solutions employing the simple, refined lines of modern design. Salamander's A/V furniture lines — the Chameleon Collection, the Synergy System and the Archetype System — accommodate virtually any design preference and A/V requirement. Its handsome Home Theater seating can be similarly customized with a variety of materials, styling options

a black steel support column for cable storage. It provides maximum screen flexibility for tabletop use with flat-panel TVs from 32 to 52 inches with a maximum weight of 110 lbs. The remote-controlled mount rotates up to 30 degrees left and right, offers three height adjustments, and includes a universal mounting-hole pattern. The programmable remote can be pre-set to a favorite screen position.

Flexible Solutions

The **Flexo Series** consists of five sleek, low-profile wall mounts capable of tilting as needed using weightless ZeroForce Tilt



**Flexo Wall Mount
with Extending Wings**

requirements. Its mounting systems are easier to install and can be customised with a variety of materials, styling options and accessories, and its new mounting systems for plasma and other flat-panel displays make them easier than ever to integrate with A/V furniture or independently mount onto a wall or ceiling. Salamander Designs was founded in 1992 in Hartford, Connecticut, and is now based in Bloomfield. For further technical information, visit Salamander's Web site at www.salamanderdesigns.com.

###

For high resolution artwork please email Vikki Greenleaf at vikki@jbstanton.com or call (860)542-1234 Extention 701.

J.B. Stanton Communications: NY/CT/LA/HK
40 Greenwoods Road West
Norfolk, CT 06058
[860] 542-1234 Voice
[860] 542-0005 Fax

If you do not wish to receive further emails please email: [Vikki Greenleaf](mailto:Vikki.Greenleaf) and put remove in the subject line.